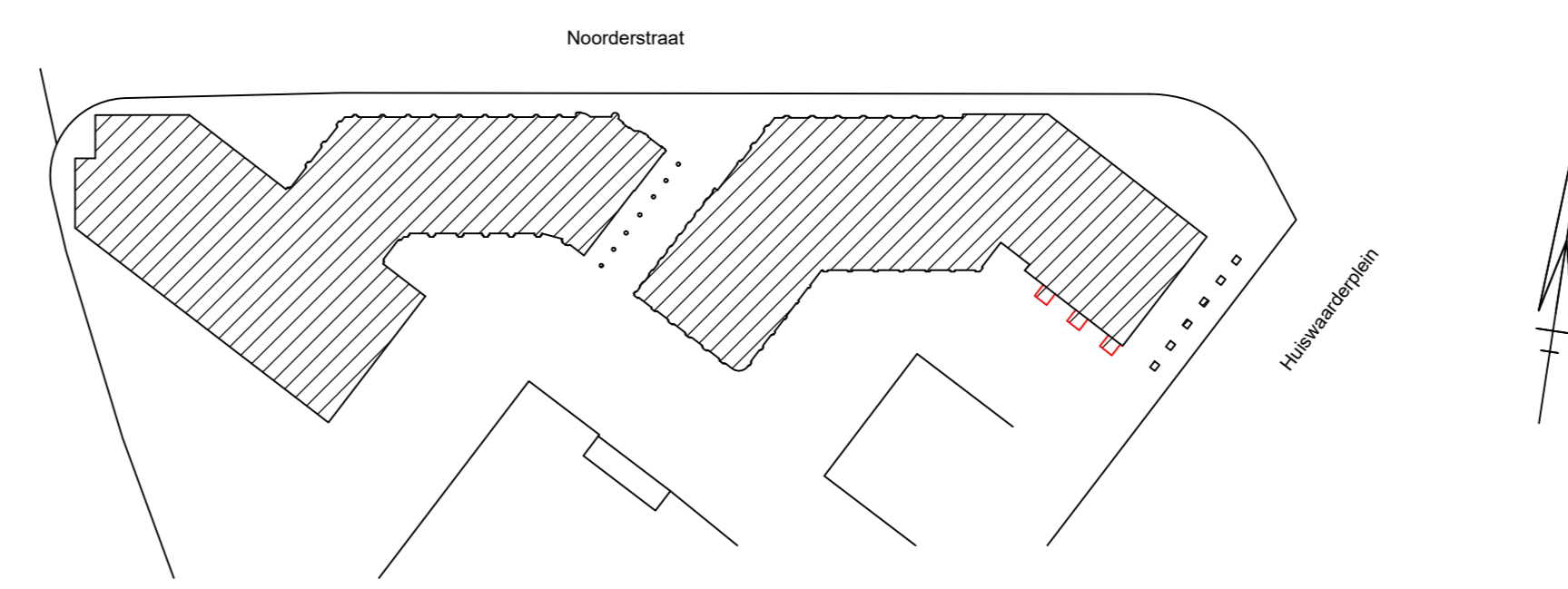


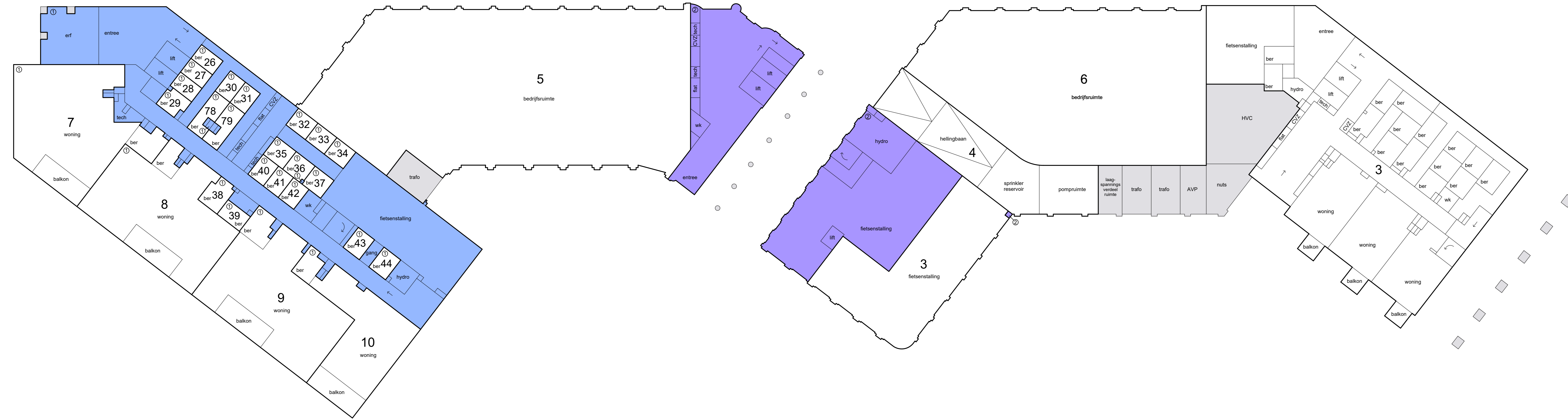
Voorgenomen ondersplitsing in appartementsrechten van het appartementsrecht: Alkmaar C A2  
 Grondpercelen: Alkmaar C 9367, 9368, 9369, 9370, 9371, 9372, 9373, 9374, 9375, 9377, 9378, 9379, 9380, 9381 en 9382



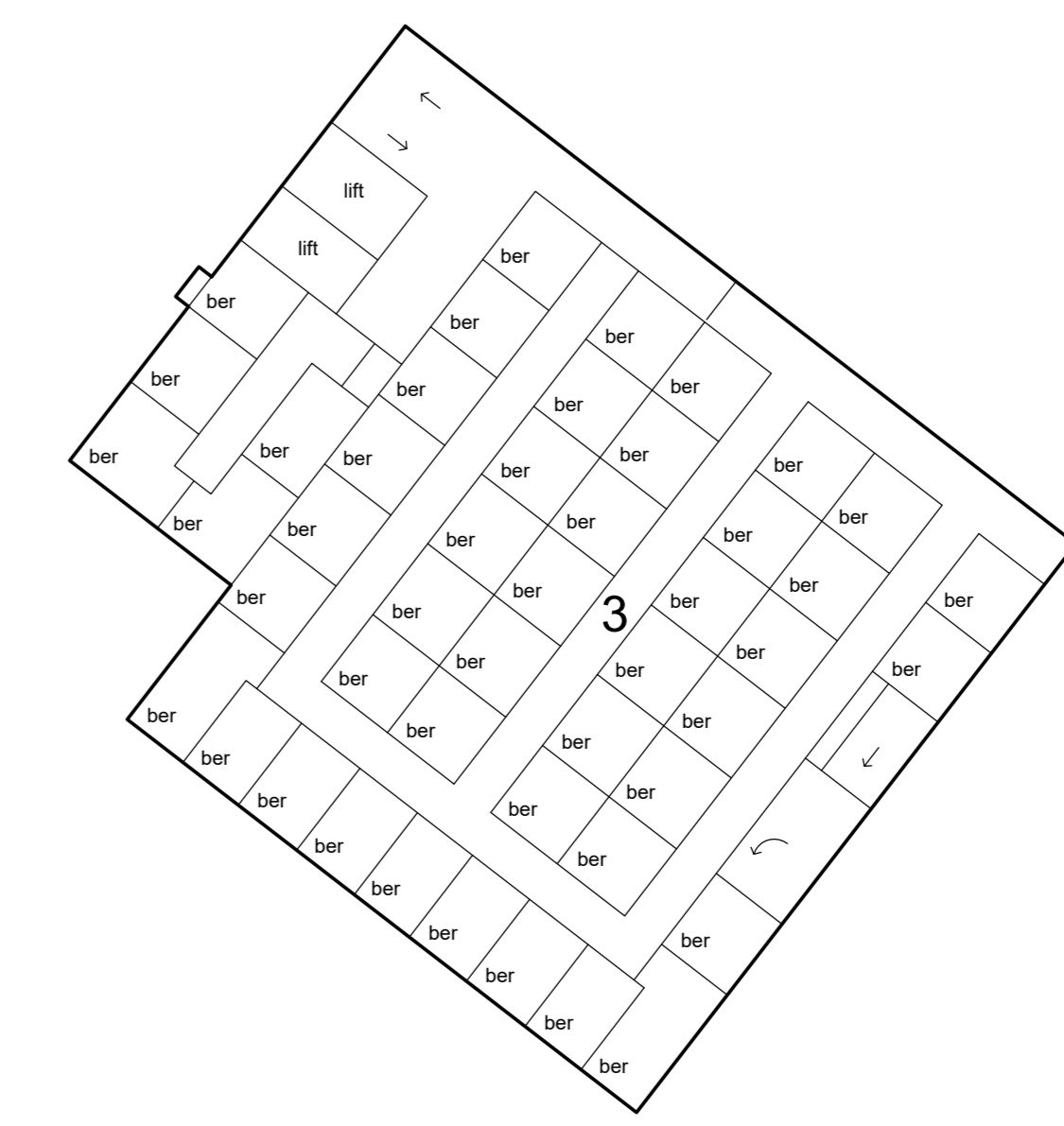
Situatie 1: 1000 Alkmaar C 9367, 9368, 9369, 9370, 9371, 9372, 9373, 9374, 9375, 9377, 9378, 9379, 9380, 9381 en 9382

= Erfdienstbaarheid

- Schaal 1 : 200
- = Gemeenschappelijk hoofdsplitsing
  - = Gemeenschappelijk ondersplitsing A1
  - = Gemeenschappelijk ondersplitsing A2
- Tekening bestaat uit 10 bladen  
 Blad 1






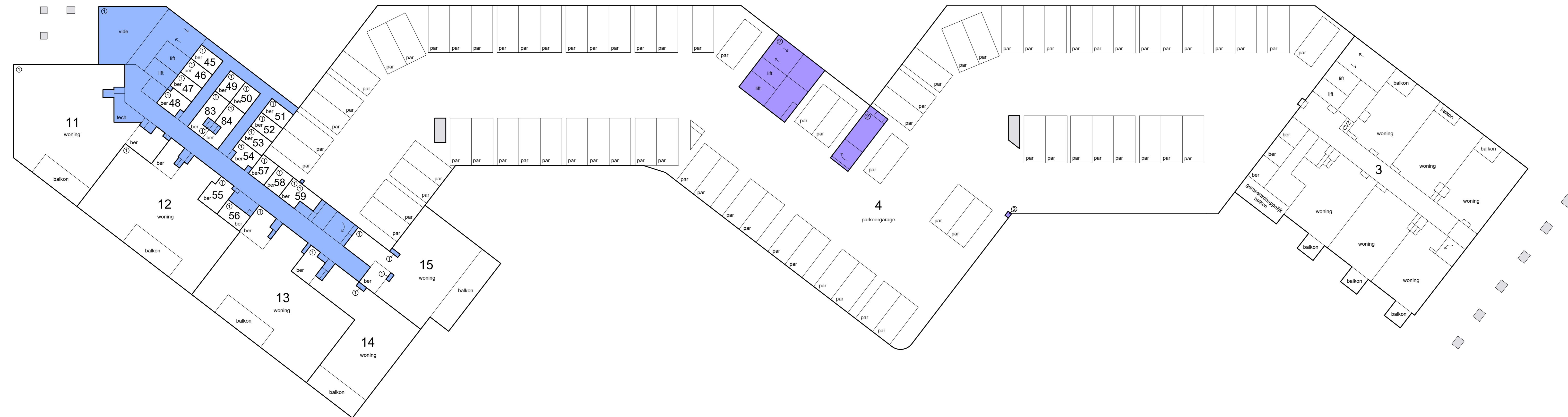
begane grond



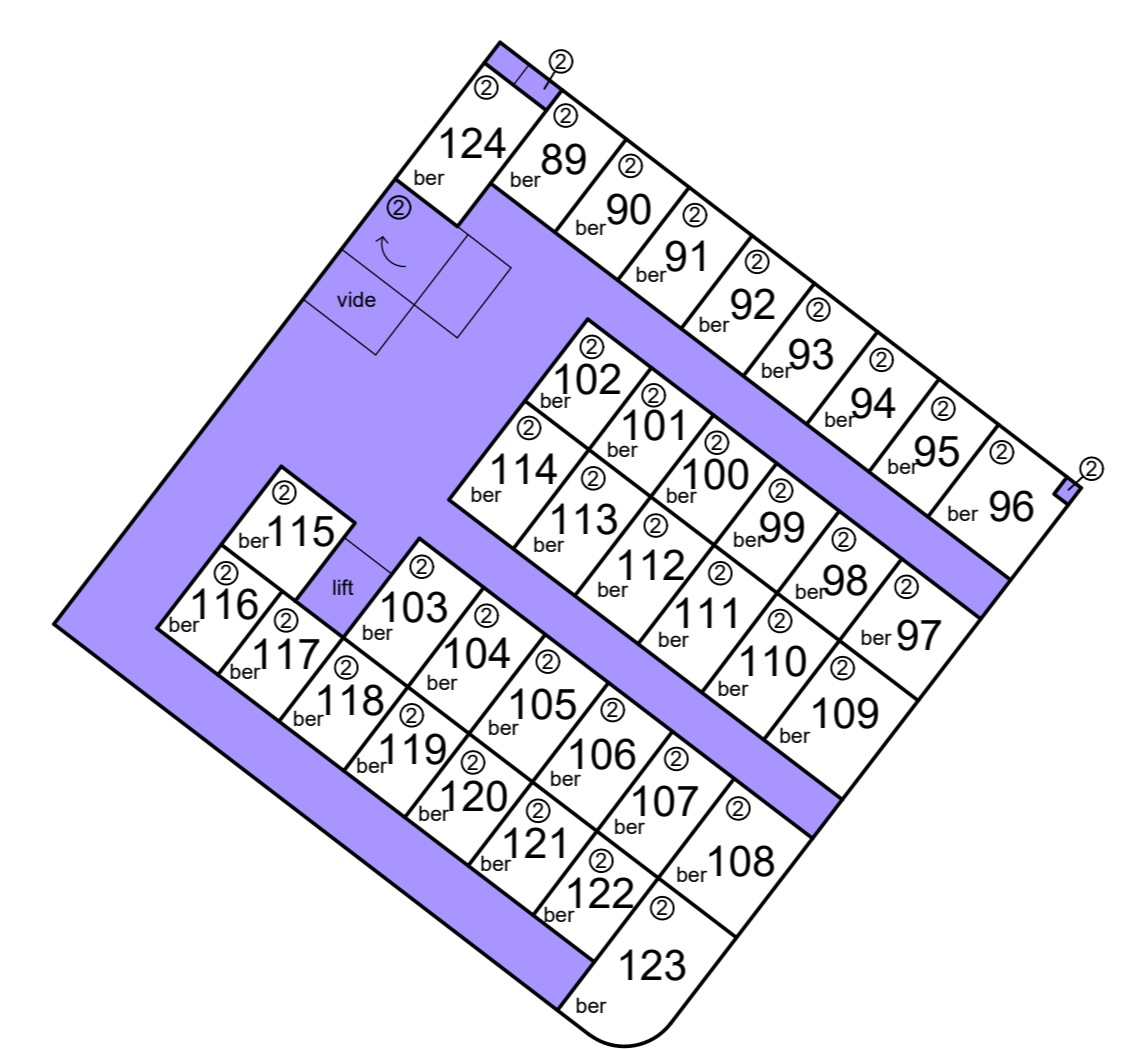
kelder



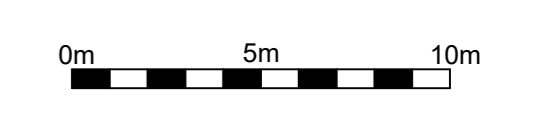
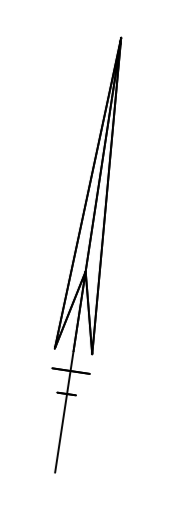
- Schaal 1 : 200
-  = Gemeenschappelijk hoofdsplitsing
  -  = Gemeenschappelijk ondersplitsing A1
  -  = Gemeenschappelijk ondersplitsing A2
- Tekening bestaat uit 10 bladen  
Blad 2



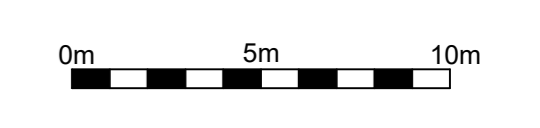
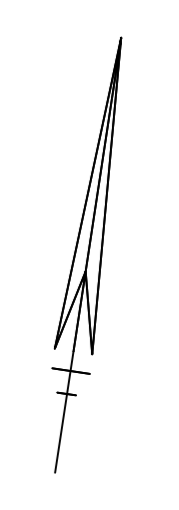
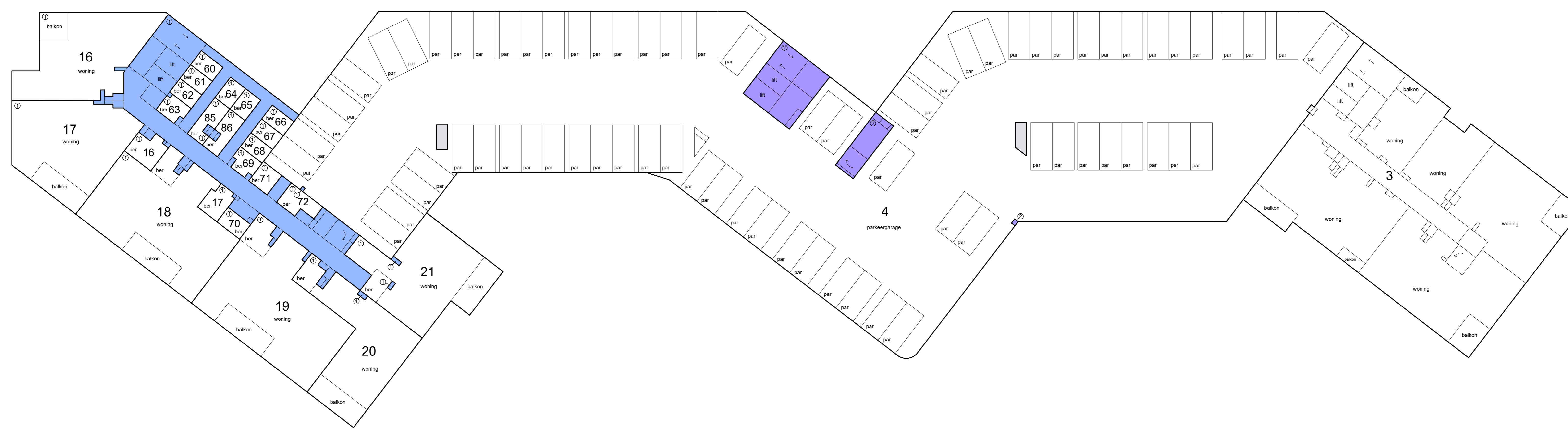
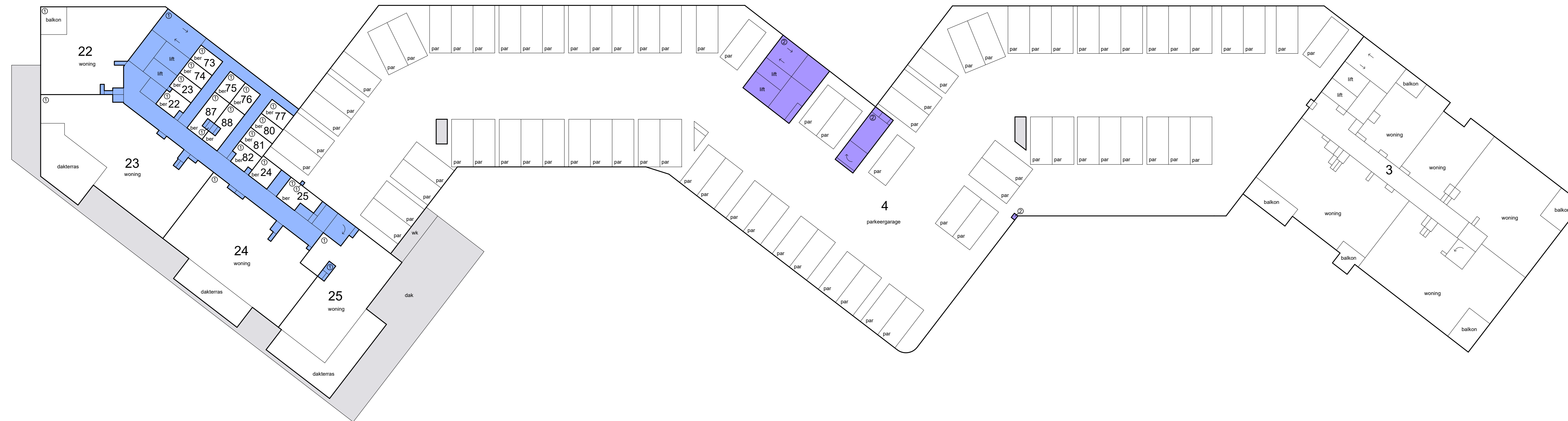
1e etage






tussenverdieping



- Schaal 1 : 200
- ☐ = Gemeenschappelijk hoofdsplitsing
  - ☐ = Gemeenschappelijk ondersplitsing A1
  - ☐ = Gemeenschappelijk ondersplitsing A2
- Tekening bestaat uit 10 bladen  
Blad 3



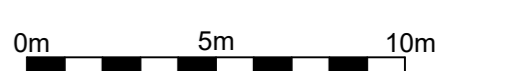
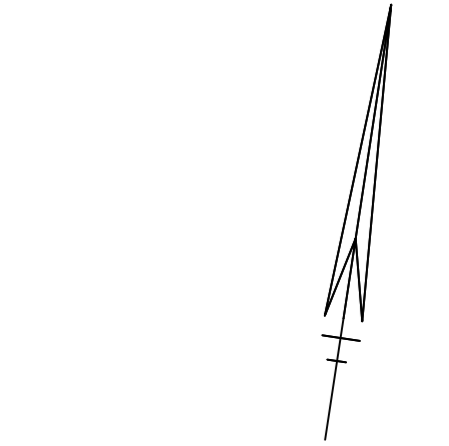
- Schaal 1 : 200
-  = Gemeenschappelijk hoofdsplitsing
  -  = Gemeenschappelijk ondersplitsing A1
  -  = Gemeenschappelijk ondersplitsing A2
- Tekening bestaat uit 10 bladen  
Blad 4



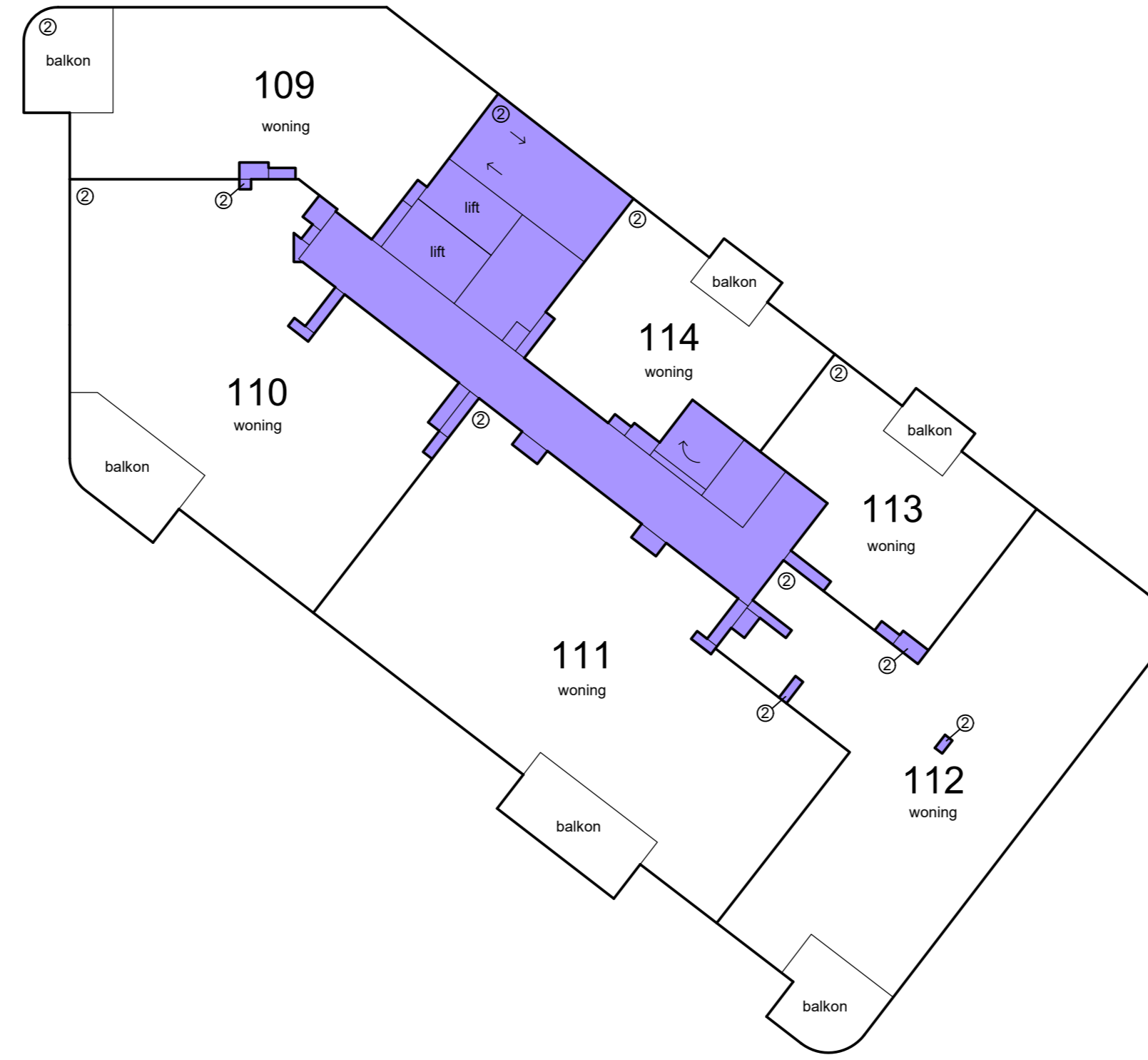
5e etage



4e etage



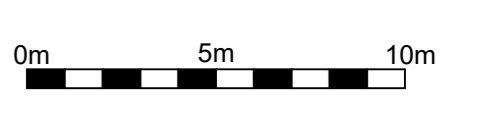
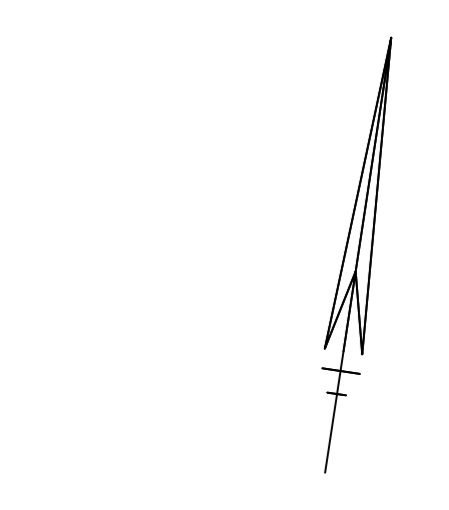
Schaal 1 : 200  
□ = Gemeenschappelijk hoofdsplitsing  
■ = Gemeenschappelijk ondersplitsing A1  
■ = Gemeenschappelijk ondersplitsing A2  
Tekening bestaat uit 10 bladen  
Blad 5



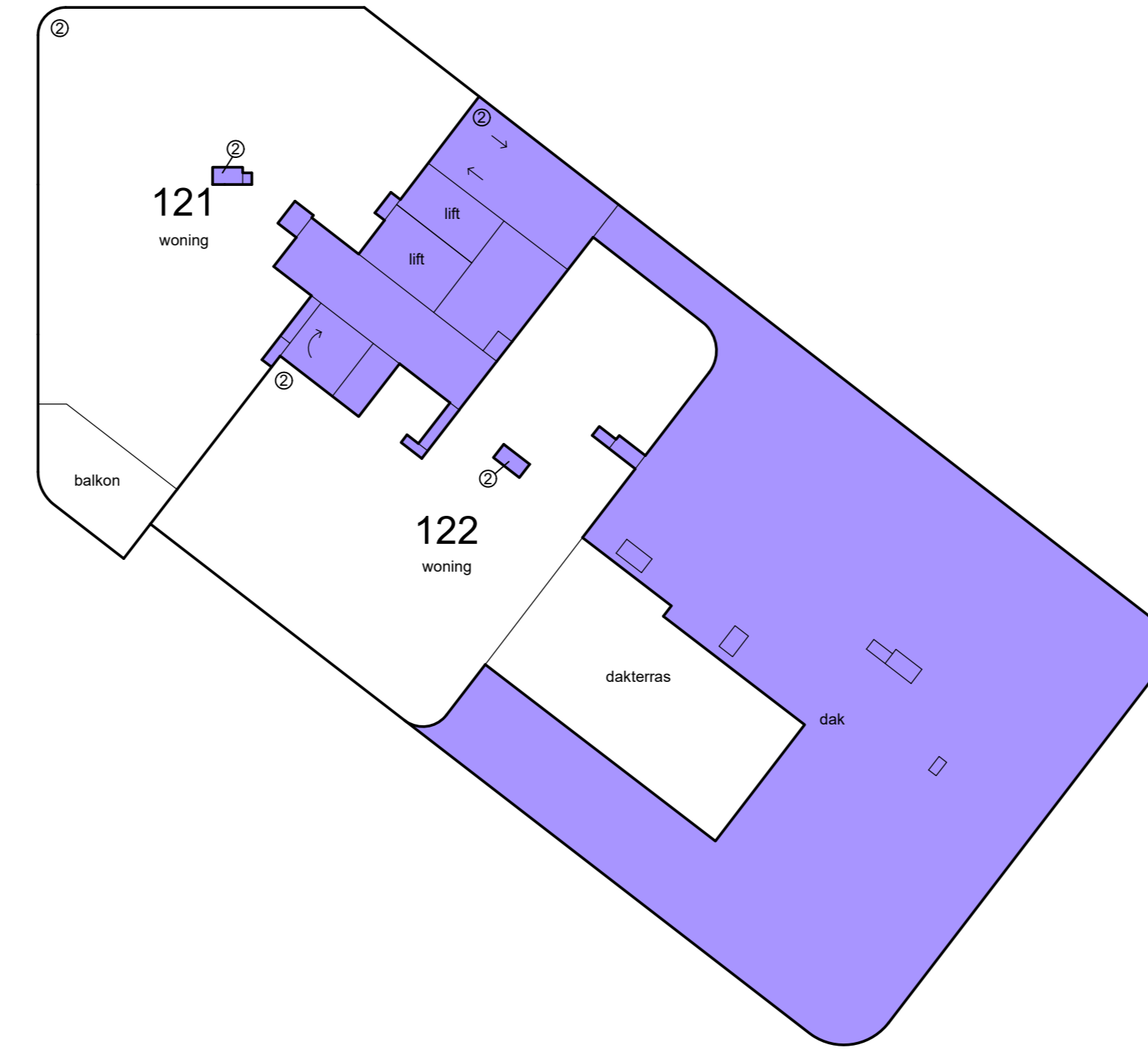
7e etage



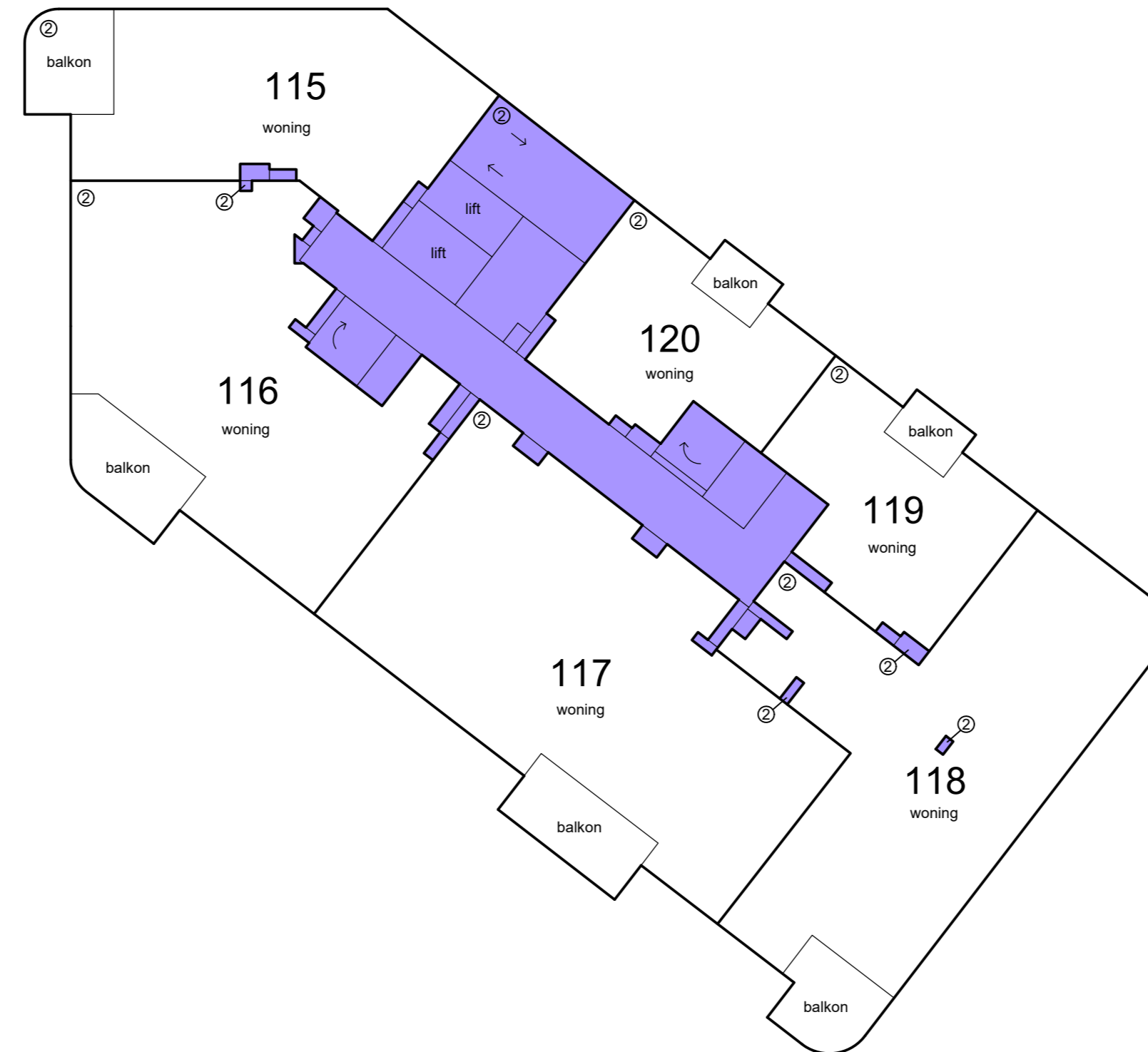
6e etage



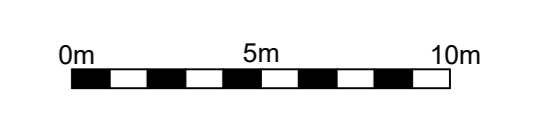
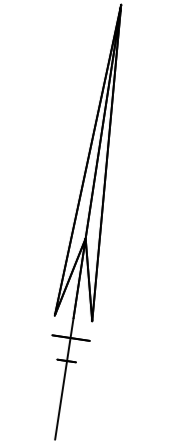
- Schaal 1 : 200
- = Gemeenschappelijk hoofdsplitsing
  - = Gemeenschappelijk ondersplitsing A1
  - = Gemeenschappelijk ondersplitsing A2
- Tekening bestaat uit 10 bladen  
 Blad 6

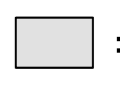




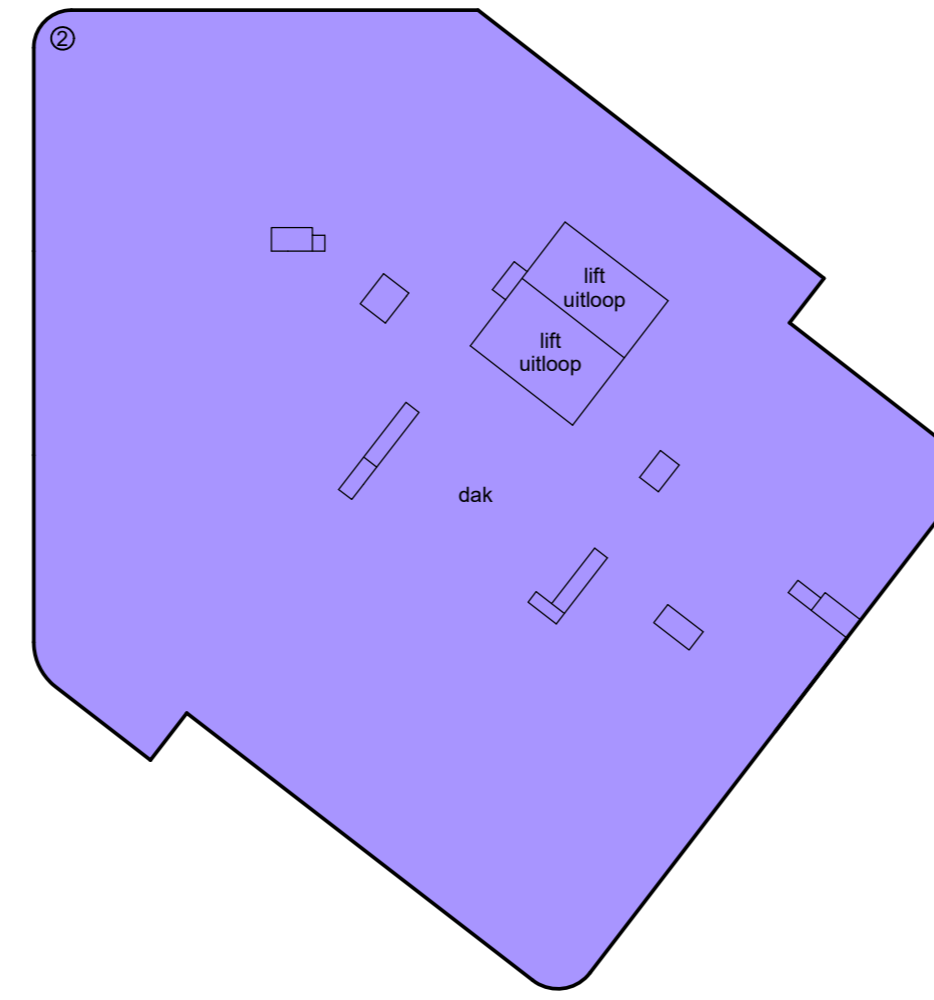
9e etage



8e etage



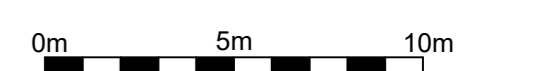
- Schaal 1 : 200
-  = Gemeenschappelijk hoofdsplitsing
  -  = Gemeenschappelijk ondersplitsing A1
  -  = Gemeenschappelijk ondersplitsing A2
- Tekening bestaat uit 10 bladen  
Blad 7

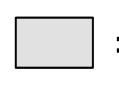




11e etage



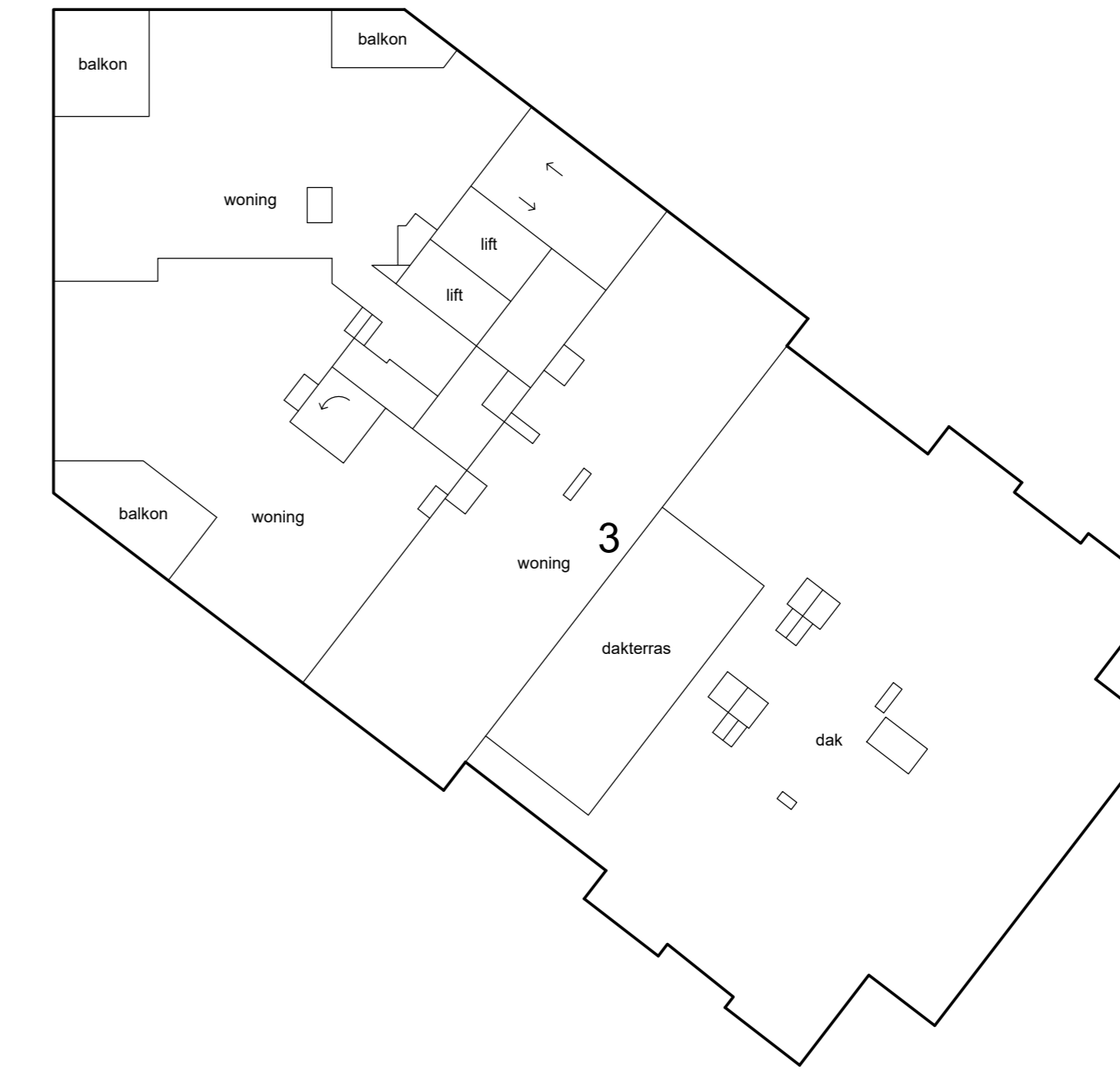
10e etage



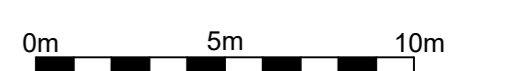
- Schaal 1 : 200
-  = Gemeenschappelijk hoofdsplitsing
  -  = Gemeenschappelijk ondersplitsing A1
  -  = Gemeenschappelijk ondersplitsing A2
- Tekening bestaat uit 10 bladen  
Blad 8



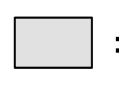


13e etage



12e etage





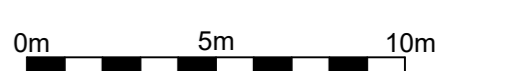
- Schaal 1 : 200
-  = Gemeenschappelijk hoofdsplitsing
  -  = Gemeenschappelijk ondersplitsing A1
  -  = Gemeenschappelijk ondersplitsing A2
- Tekening bestaat uit 10 bladen  
Blad 9






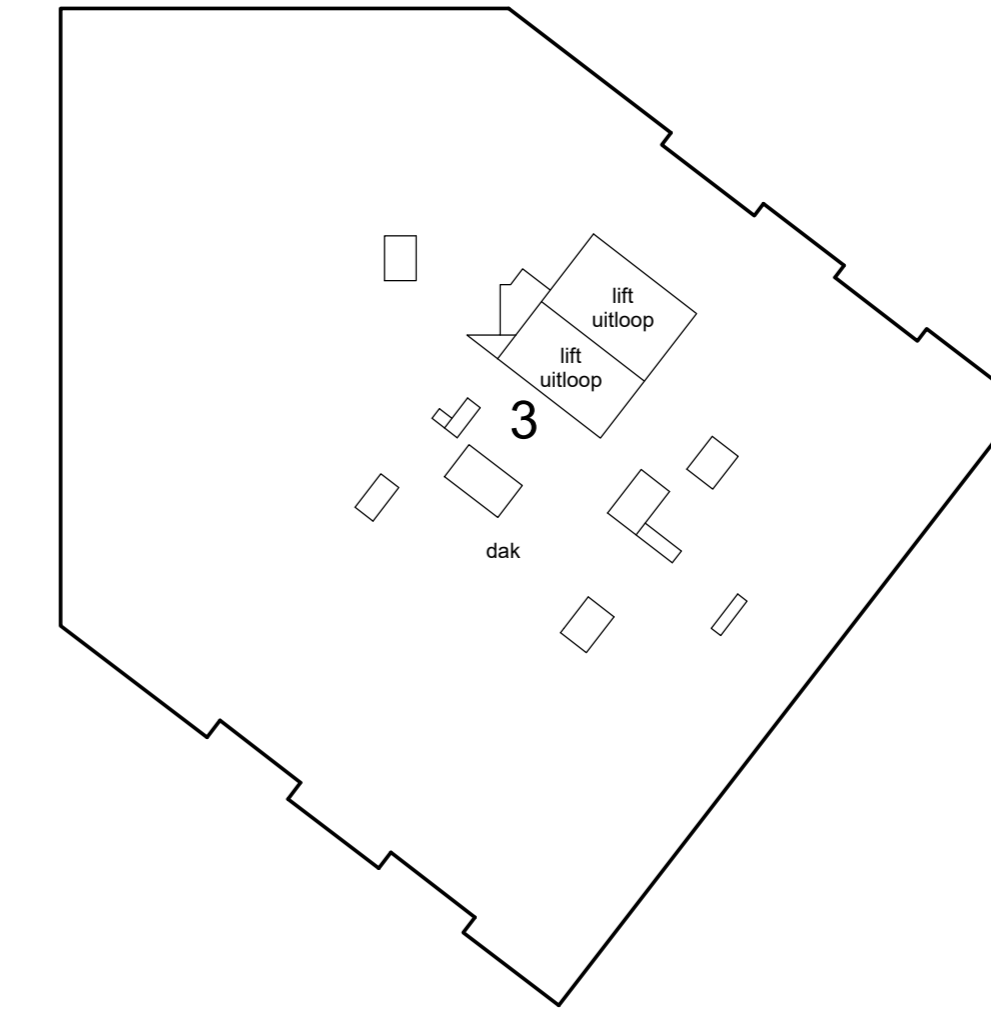
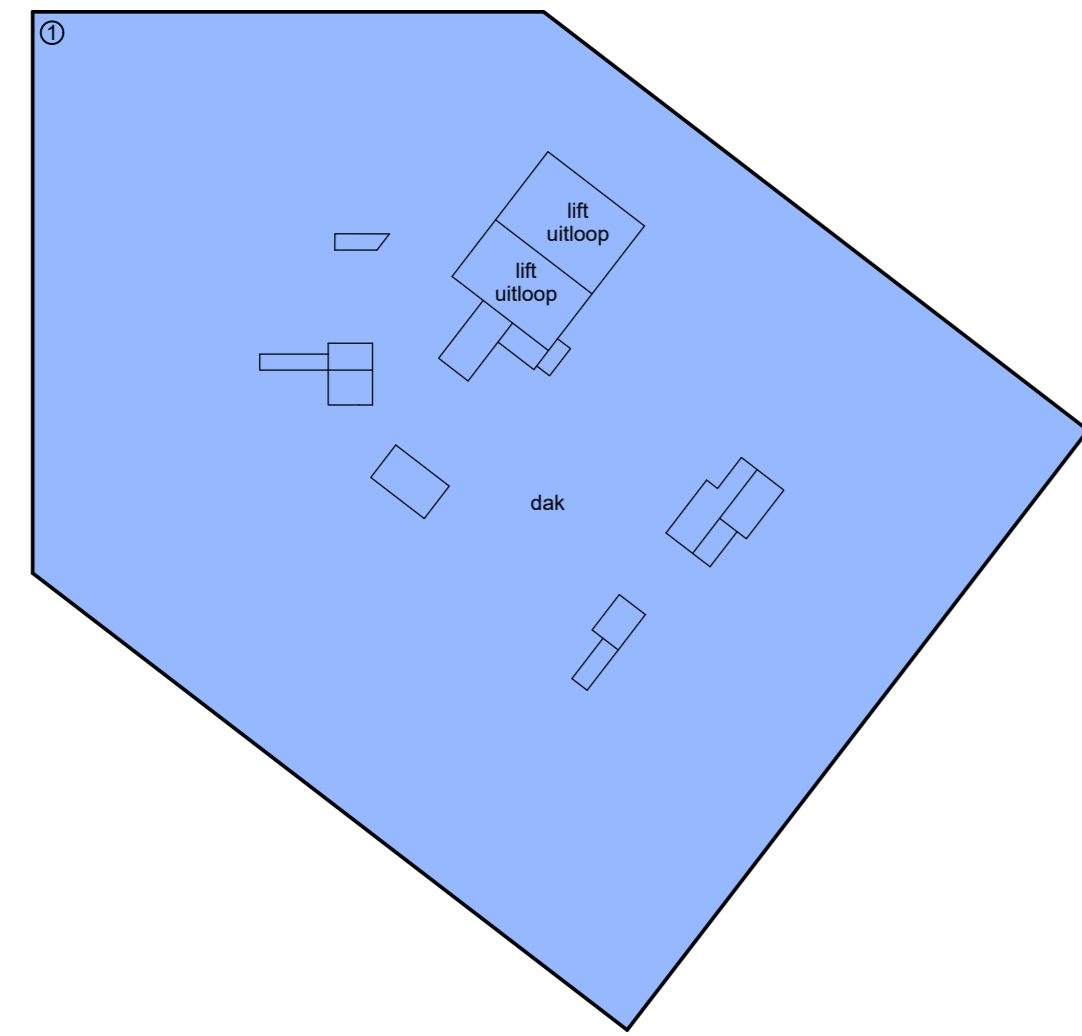
15e etage



14e etage



- Schaal 1 : 200
-  = Gemeenschappelijk hoofdsplitsing
  -  = Gemeenschappelijk ondersplitsing A1
  -  = Gemeenschappelijk ondersplitsing A2
- Tekening bestaat uit 10 bladen  
Blad 10



dak

